



B13R-7 / B15R-7 / B16R-7

7 SERIES FORKLIFTS

Electric 1.25 to 1.6 ton capacity 3 wheel rear drive



Leading the way

The new 7 Series of 3 wheel electric counterbalance forklift trucks, continue to follow the core Doosan tradition of delivering simple, powerful performance, whilst most of all, delivering the best possible value for our customers.

The specially designed ergonomic operator compartment keeps the operator in complete control at all times, improving productivity and reducing stress and fatigue. The new model offers the latest design in ergonomic hydraulic controls. Thanks to an improved durable design, Doosan's new 7 Series electric trucks exceed the highest demands for safe operation.

The latest in AC control systems provide an unbeatable combination of power, performance and reliability. Each parameter is fully adjustable to perfectly match every your individual requirement, providing maximum control and accuracy for every function

“ Higher lifting and travel speed helps me to complete my job efficiently ”

PRODUCTIVITY

- Excellent visibility
- Smooth driving sensitivity
- Direction switch on main control valve



“ The robustness of the Doosan truck gets the toughest of jobs done ”

DURABILITY

- Reliable AC control
- Durable rear drive axle
- Durable Oil cooled disk brake



“ The Doosan service support network has never let me down ”

SERVICEABILITY

- Doosan service network coverage
- Quick service response
- Easy to fix design



“ With the reassuring features of Doosan truck, operation is safe and comfortable ”

SAFETY AND ERGONOMICS

- Anti roll back
- Operator sensing system(OSS)
- Automatic speed control
- ISO3691 Hydraulic locking



Features overview

Power, excellent performance, driving comfort, durability, and outstanding Productivity will certainly satisfy you

DURABILITY

- Reliable AC controller
- Rugged and durable rear drive axle
- ODB - Oil cooled disc brakes
- Robust frame & overhead guard

PRODUCTIVITY

- Excellent visibility
- Smooth and responsive acceleration and plugging
- Direction switch on hydraulic control lever
- Battery changing system (SRIO)

SERVICEABILITY

- Worldwide service network
- Doosan genuine parts
- Easy to access controller room and electric parts
- Examine forklift program with 'Easy view'
- Rear drive axle maintenance free



ENHANCED SAFETY

- Anti roll back
- Automatic speed control
- ISO3691 Hydraulic locking
- OSS(Operator sensing system)
- Moving front axle
- Emergency switch
- LED light
- Large panoramic mirror

ADDITIONAL FEATURES

- Easy and Instinctive display
- Convenience tray
- Compact steering wheel
- Comfort and adjustable seat
- Adjustable column
- Turtle mode

Durability

The 7 Series provide smooth and durable operation in various work applications.

With the reliable AC controller and the optimized design, Doosan's new machine is able to deliver efficient operation.



◀ Doosan 7 series offers the torque and speed necessary to run up ramps and meet the challenges of the toughest applications.



Reliable AC controller

Curtis AC controllers provide an unbeatable combination of power, performance and functionality. IP 65 rated controller is very reliable and well proven in tough applications.



AC drive & hydraulic motors

Maintenance Free Electric Motors by eliminating motor brushes and commutators.



Rugged and Durable Rear Drive Axle

The rear drive axle is controlled by integrated drive controller and effectively transfers the power and torque of the drive motor to the final drive for smooth and quiet operation. The axle is maintenance free.



ODB (Oil cooled Disk Brake)

Virtually maintenance-free, ODB is standard equipment on the B16R-7. The enclosed brake system eliminates outside contamination significantly extending the brake life up to 5 times longer when compared to conventional shoe brakes.

Productivity

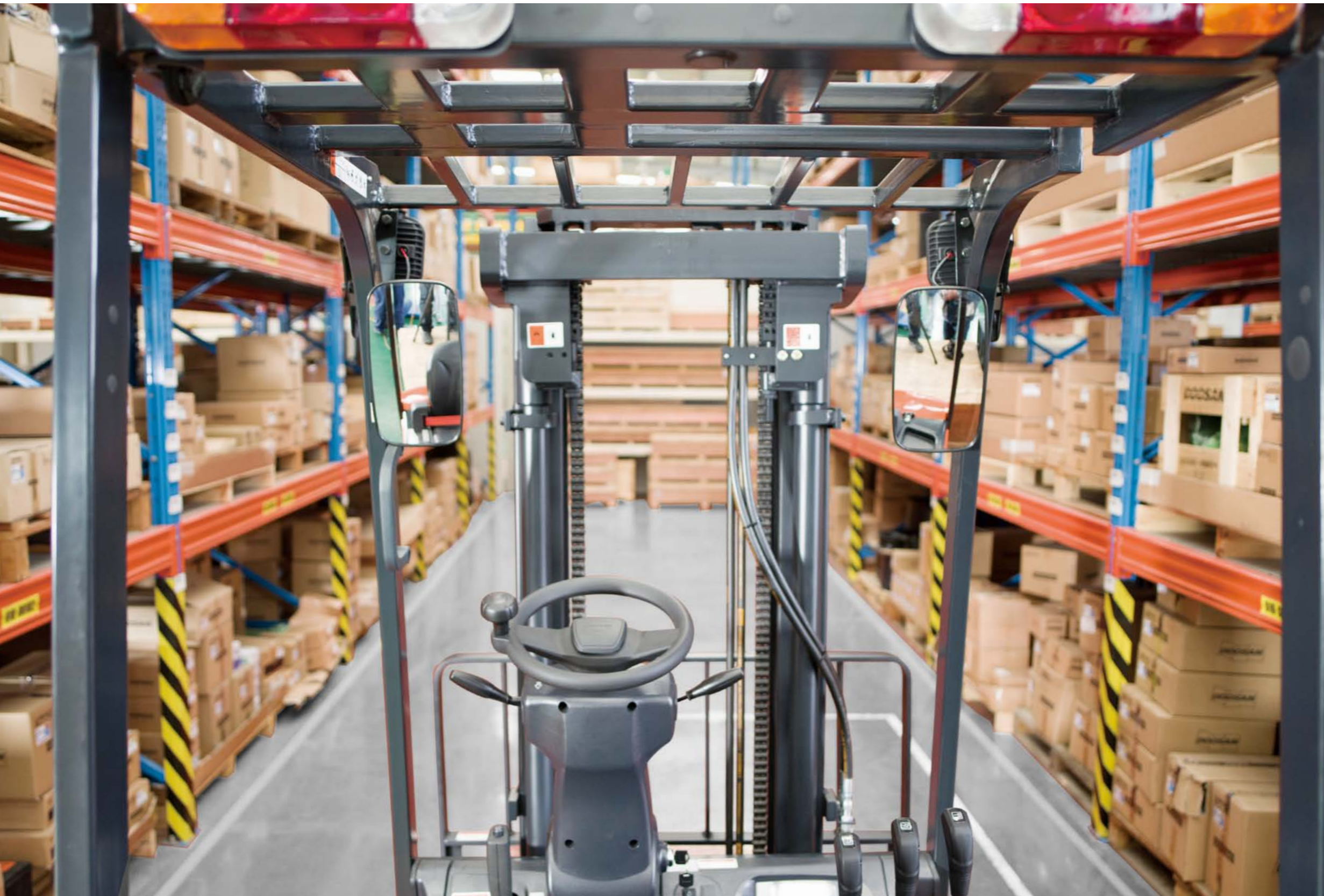
Excellent Visibility and Driving Acceleration

Excellent visibility

The precise designed overhead guard profile with angled roof bars provides a clear view upwards whilst ensuring ultimate strength for safety.



Neatly arranged hydraulic hoses and chains provide clear front visibility through the wide view mast.



Hydraulic lever with directional switch (Option)

The direction switch is located on the hydraulic lever, meaning quick change of forward to backward.



Side Roll in & Out Battery (Option)

Easy to service without efforts. Tool free side panel, easy removal of floor plate and control valve cover.



Productive acceleration & plugging

Reduce initial acceleration for safe & comfortable movement.
Increase acceleration in mid & high-speed for more productive operation.
Smooth and stable plugging

Enhanced Safety



LED lights (Option)

Brighter and last longer than traditional sealed beams or halogen lights.



Emergency switch (Option)

The operator can push the emergency switch with one hand on the steering wheel quickly.



Large panoramic mirror (Option)

Provides the operator a clear view of the rear working area, improving working safely & efficiently.



Anti roll back

The controller prevents the forklift from rolling back for 5 seconds when the truck is stopped on a slope.



Automatic speed control

It automatically reduces the travel speed to the optimal speed when cornering, reducing the risk of accidents or damage.



Rear grab handle with horn (Option)

Enhances safety, comfort and convenience when traveling in reverse.



Mast lowering inter-lock & Tilt lock (ISO3691) The hydraulic locking

The hydraulic locking system prevents natural lowering and tilting. It safeguards the work array, the truck and the load even if the operator leaves the truck unattended.



OSS (Operator Sensing System)

Whenever the operator leaves the seat, the truck travel and mast lifting functions will stop. This systems avoids any unintended forklift movements when the operator is not seated.

Better Serviceability

Worldwide service network

- Head quarter
- Overseas offices and service centers

Doosan provides high-quality support, relying on its extensive dealer network. No matter where you are located, highly-skilled professionals are always ready to help you, guaranteeing maximum uptime.



Doosan genuine parts

The parts warehouse, supplies high quality Doosan parts to the dealer network.



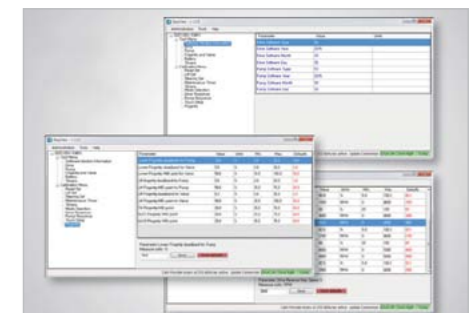
Wide open hood cover with locking type gas spring

Tool-less side panel with air ventilation



Brake oil indicator

Check brake oil level and display warning indicator on instrument panel. The reservoir can be accessed easily.



Easy view

To examine the forklift and set the program with notebook only (without a special tool)

Additional Features



Small steering wheel

The steering wheel has a compact design that reduces operator fatigue.



Adjustable column

The operator can adjust the position of the column for convenience and comfort.



Easy and instinctive instrument panel

Operators can control the truck's performance settings during operation, simply by navigating the instrument panel.



Moving Front Axle

When extended (by tilting backward)
Safety driving due to larger wheel base, which provides better stability.

When shortened (by tilting forward)
More excellent maneuverability due to extremely compact.



Premium adjustable seat (Grammer seat, Option)

The full suspension comfort seat is fully adjustable to accommodate every individual preference. Additional heating system is also available for better operator convenience.



Convenience tray

The convenience tray was conceived by adopting combinations of new and old favorites to give the best operator experience. Some of the features include: a large cup holder, a USB port, 12V power outlet, and a clipboard holder.



Turtle mode

Operators can select pre defined travel speed setting, without impacting the lifting speed. This mode ensures safe maneuverability in delicate operating situations.

SAVE SPEED



Global Leader
DOOSAN FORKLIFT



The best proposal for warehouse application

Doosan can provide you with the best proposal for your warehouse operation, from reach trucks to stackers, forklifts to pallet trucks and much more. Please contact Doosan to discuss your needs.



A Transport

Transporting is the process of moving product from one point to another. Distance travelled manoeuvrability requirements and the need for multi-tasking play a critical role in determining product selection.

B Bulk Storage

Bulk storage areas allow for storage of large quantities of a similar product. Lift trucks used are typically no wider than the product being stored.

C Order picking

Order picking is the process of fulfilling customer orders. The product size, weight and storage method will determine the appropriate lift truck.

D Shelving

Full space utilisation of your warehouse also means effective use of steel and wire shelving. Small parts and similar sized materials can be stored efficiently.

E Dock Work

Any application that requires loading and unloading products from a delivery vehicle and staging them for further handling is considered dock work. The particular recommended dock truck will depend on your specific demands and the characteristics of your shipping and receiving areas.

F Rack Storage

Storage rack considerations determine effective vertical storage and product selectivity. The type of lift truck chosen for load handling will require specific aisle width and rack layout parameters.

G Narrow-Aisle

Narrow aisles offer several benefits by providing better storage utilisation. Less space is required for lift trucks to operate, while productivity and organisational efficiencies also improve. Back-to-back racking allows product to be stored two deep.

H Outdoor

Outdoor work can include tasks that require loading and unloading trucks and trailers, transporting loads and storing goods in racks and bulk locations. The surfaces may be improved but typically include rough terrain, gravel, pot holes, hills, and other obstacles.

Main Specifications

MAJOR SPECIFICATION		B13R-7	B15R-7	B16R-7
Load capacity/rated load	kg(lb)	1250 (2500)	1500 (3000)	1600 (3200)
Load centre distance	mm(in)	500 (24)	500 (24)	500 (24)
Load distance, centre of drive axle to fork	mm(in)	330 (13.0)	330 (13.0)	330 (13.0)
Wheelbase (forward x vertical x back)	mm(in)	1121 x 1145 x 1195 (44.1 x 45.1 x 47.0)	1171 x 1195 x 1245 (46.1 x 47.0 x 49.0)	1171 x 1195 x 1245 (46.1 x 47.0 x 49.0)
Aisle width for pallets 1000 x 1200 crossways	mm(in)	3064 (120.6)	3089 (121.6)	3114 (122.6)
Aisle width for pallets 800 x 1200 lengthways	mm(in)	3186 (125.4)	3211 (126.4)	3236 (127.4)
Turning radius	mm(in)	1415 (55.7)	1440 (56.7)	1465 (57.7)
Travel speed, loaded / unloaded	km/h(mph)	12.0 / 13.0 (7.5 / 8.1)	12.0 / 12.5 (7.5 / 7.8)	12.0 / 12.5 (7.5 / 7.8)
Lift speed, loaded / unloaded	mm/s(fpm)	300 / 530 (59.1 / 104.3)	290 / 530 (57.1 / 104.3)	290 / 530 (57.1 / 104.3)
Lowering speed, loaded / unloaded	mm/s(fpm)	500 / 450 (98.4 / 88.6)	500 / 450 (98.4 / 88.6)	500 / 450 (98.4 / 88.6)
Maximum drawbar pull, loaded / unloaded, 5 minute rating	N(lb)	9623 / 9623 (2163 / 2163)	9623 / 9623 (2163 / 2163)	9623 / 9623 (2163 / 2163)
Maximum gradeability, loaded / unloaded, 5 minute rating	%(deg)	24 / 25 (13.5 / 14.0)	22 / 25 (12.4 / 14.0)	20 / 25 (11.3 / 14.0)
Battery voltage / nominal capacity K5	V/Ah	24 / 875	24 / 1000	24 / 1000

Standard Features and Optional Extras

SAFETY & STABILITY	OPERATOR COMFORT(ERGONOMICS)	PRODUCTIVITY	DURABILITY & SERVICEABILITY
Anti roll back	Adjustable tilt steering column & easy grip (Ø280 size) steering wheel	Excellent visible mast	Full AC system
Automatic speed control	Comfort and adjustable seat	Hydraulic cushioned valve in secondary cylinder (FFL & FFT)	IP65 Rated Curtis controller
ISO 3691 Mast lowering inter-lock & tilt lock	Easy to read instrument panel	Smooth and responsive acceleration and plugging	Oil-cooled disc brakes (ODB)
Low battery warning alarm	Entry grip bar	Application packages : Cold	Robust frame structure and strong structure overhead guard
OSS(Operator sensing system)	Large cup holder, usb port & 12v electric jack, clip board	Battery changing system (SRIO)	Rugged, durable and maintenance free rear drive axle
Emergency stop switch	Premium seats : Grammer seat	Direction switch on hydraulic control valve	Tool-less side cover with air ventilation
LED Lights	Panoramic mirror	Mono-pedal	Wide open battery hood cover
Rear grab handle with horn switch			

- Standard features
- Optional extras

* Remark : This list is based on factory data. Standard or optional can vary for specific countries.

About Doosan

Values that drive our future growth

Trust in people is the foundation on which Doosan has built its century of success

Doosan has always put 'People' first for the past 100 years, based on our management philosophies.- 'Business is not meant to make profits, but to help people grow.' (Late Too Pyung Park, First Chairman), and continues to spur corporate development with global competitiveness originated from human resources.

Doosan the oldest, but fastest growing company

Doosan has recorded the longest business history since its inauguration in 1896, but has grown at its most rapid pace for the past 10 years.

Doosan-the global Infrastructure Support Business (ISB) company

Doosan has created in excess of 90% of its sales within the ISB sector through vigorous reorganisation of its business portfolio since 1998. In the past, 70% of our business was concentrated on consumer goods, but we have successfully transformed our business DNA to the infrastructure support business that constructs and reinforces social infrastructure.

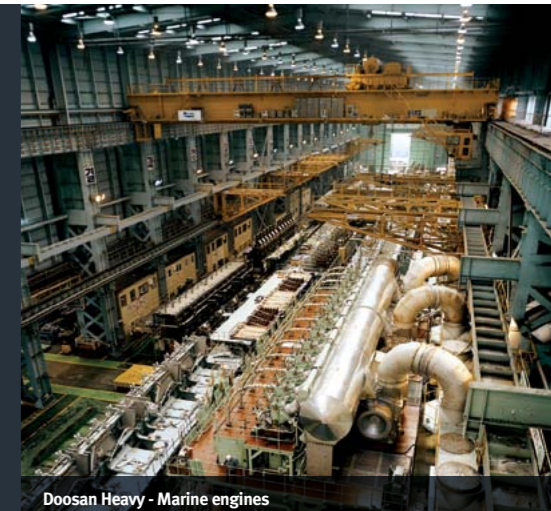
Doosan, surging as a global company

Doosan has become the global ISB leader based on its world class products and services. In addition, as a true global company, Doosan's overseas employees encompass 50% of its human resources, and overseas sales take more than over 60% of the total sales.



Doosan Infracore - Construction equipment

Committed To Our Customers
We are committed to our customers, providing superior products and excellent services to go with them into the future.



Doosan Heavy - Marine engines

Committed To Innovation
We remain committed to the advancement of new technologies and development of talented individuals, positioning us to respond effectively to the rapid changes taking place in the 21st century. Our mission is to strengthen our global position and become the industry leader well into the future.



Doosan Bobcat - Skid loader (with Doosan engine)



Doosan Way
The Doosan Way is our unique way of doing business; the philosophy and culture that will guide us to become the "Proud Global Doosan."






Our Promise
Doosan will be the partner you can count on, always putting our commitment to you first.



Doosan Heavy - Seawater desalination plants



-  Production Subsidiary
-  Sales Subsidiary
-  Parts Depot Center



Doosan Corporation Industrial Vehicle
Web site: www.doosan-iv.com

2019 Jan

Authorized Dealer

--